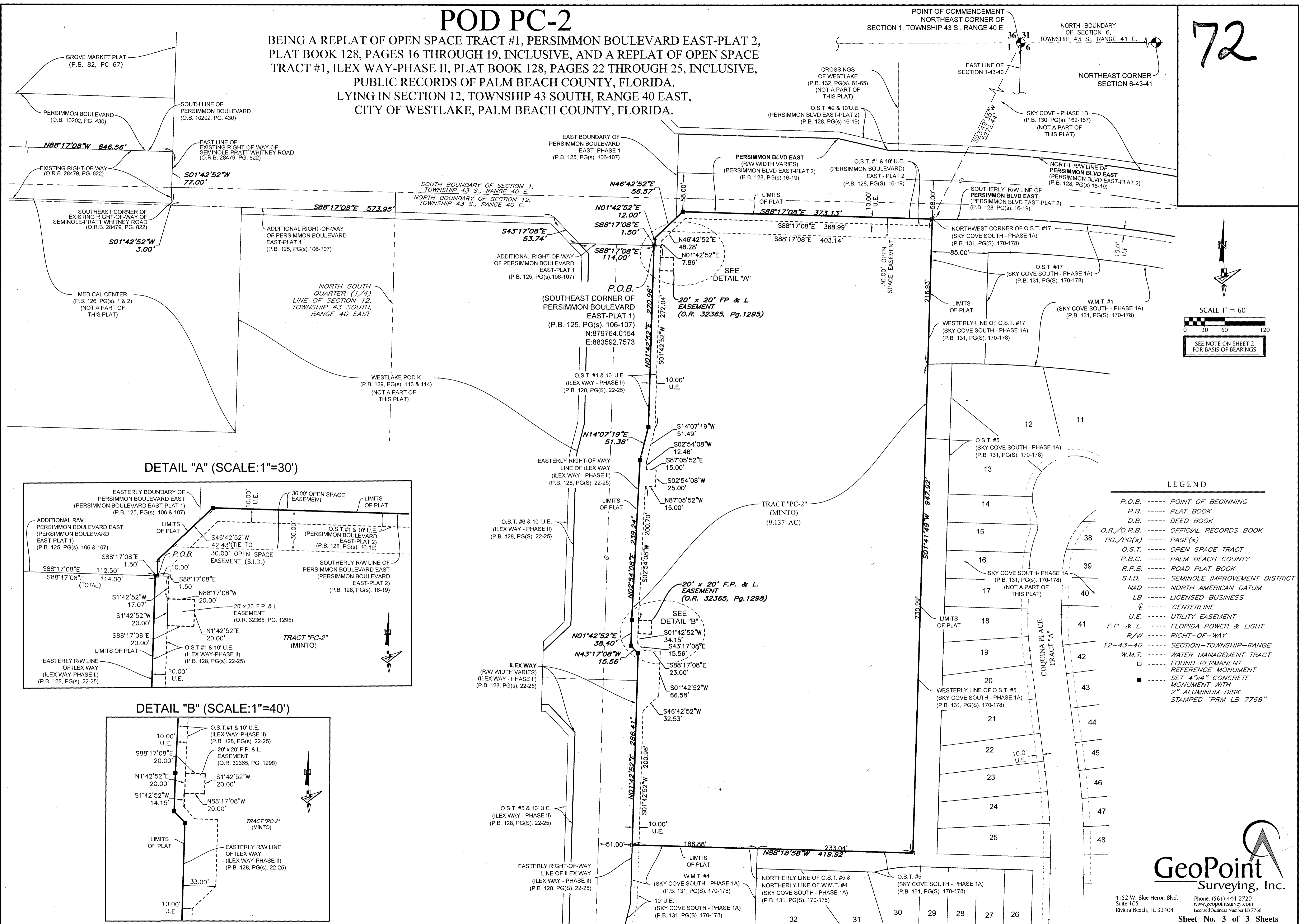
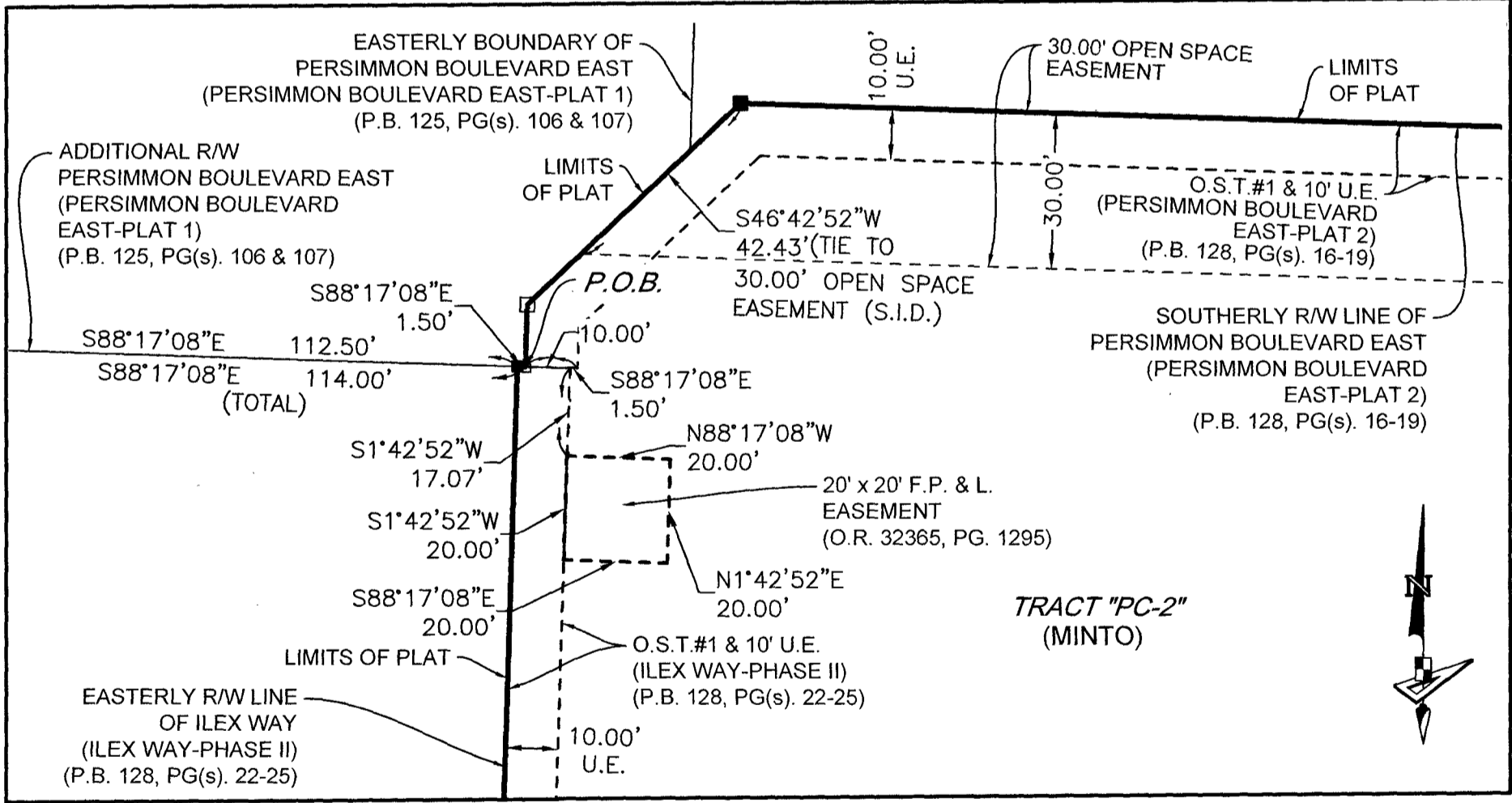


POD PC-2

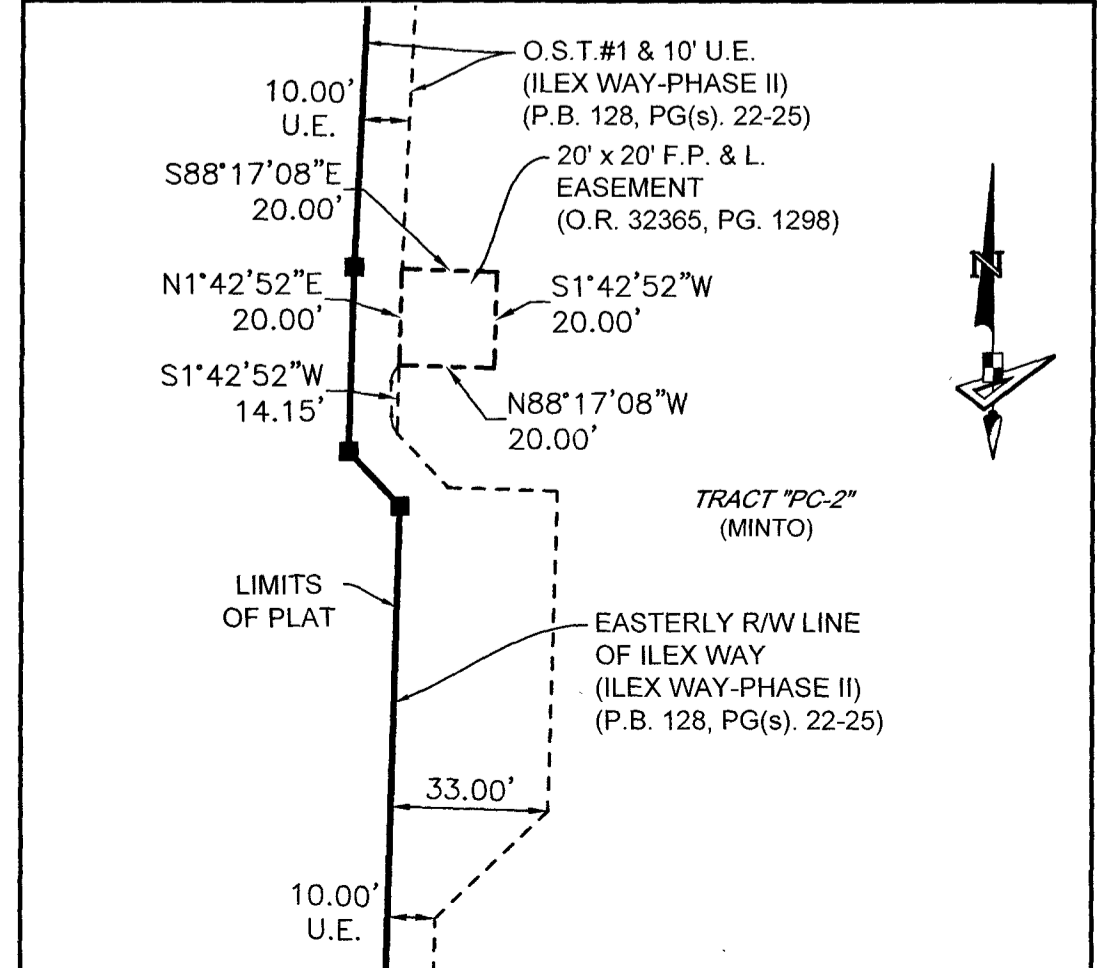
BEING A REPLAT OF OPEN SPACE TRACT #1, PERSIMMON BOULEVARD EAST-PLAT 2, PLAT BOOK 128, PAGES 16 THROUGH 19, INCLUSIVE, AND A REPLAT OF OPEN SPACE TRACT #1, ILEX WAY-PHASE II, PLAT BOOK 128, PAGES 22 THROUGH 25, INCLUSIVE, PUBLIC RECORDS OF PALM BEACH COUNTY, FLORIDA. LYING IN SECTION 12, TOWNSHIP 43 SOUTH, RANGE 40 EAST, CITY OF WESTLAKE, PALM BEACH COUNTY, FLORIDA.



DETAIL "A" (SCALE:1"=30')



DETAIL "B" (SCALE:1"=40')



- LEGEND**
- P.O.B. ----- POINT OF BEGINNING
 - P.B. ----- PLAT BOOK
 - D.B. ----- DEED BOOK
 - O.R./O.R.B. ----- OFFICIAL RECORDS BOOK
 - PG./PG(s) ----- PAGE(S)
 - O.S.T. ----- OPEN SPACE TRACT
 - P.B.C. ----- PALM BEACH COUNTY
 - R.P.B. ----- ROAD PLAT BOOK
 - S.I.D. ----- SEMINOLE IMPROVEMENT DISTRICT
 - NAD ----- NORTH AMERICAN DATUM
 - LB ----- LICENSED BUSINESS
 - CL ----- CENTERLINE
 - U.E. ----- UTILITY EASEMENT
 - F.P. & L. ----- FLORIDA POWER & LIGHT
 - R/W ----- RIGHT-OF-WAY
 - 12-43-40 ----- SECTION-TOWNSHIP-RANGE
 - W.M.T. ----- WATER MANAGEMENT TRACT
 - ----- FOUND PERMANENT REFERENCE MONUMENT
 - ----- SET 4"x4" CONCRETE MONUMENT WITH 2" ALUMINUM DISK STAMPED "PRM LB 7768"

